



English version

COMMUNAUTÉ  
DE COMMUNES  
**Baronnies**  
en drôme provençale

# Le **TRI**, **tous** **concernés !**\*

\*Waste sorting, we're all involved!



# INSTRUCTIONS FOR SELECTIVE WASTE SORTING

Containers must be :

- ✓ Emptied
- ✓ Clean or dirty
- ✓ Separated
- ✓ Not nested



Yellow bin

## METAL



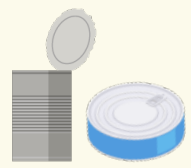
Trays



Cans




Caps



Tins



Sprays

 Even small items can be sorted!

## PAPER

Envelopes, newspapers, magazines, notebooks, books, sheets, paper bags



 **DO NOT THROW AWAY**  
 Wall paper  
 → Civic amenity site



# PLASTIC PACKAGING



Bottles



Flasks, containers and tubes



New packagings

Trays

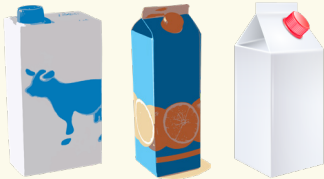
Jars et blisterpackagings

Bags, pouches and wraps

Caps, lids, tops



# CARDBOARD



Foodpackaging



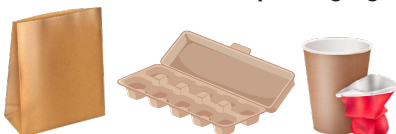
Cases



Egg cartons

Paper rolls

Cardboard packagings



## BROWN BOXES

Dispose of in special cardboard bins or at the civic amenity site



## GLASS

## GLASS BIN

Glass bottles,  
pots, jars, flasks,  
perfumes,...

**FORBIDDEN**

Mirrors, windows, porcelain,  
ceramics, terracotta, light bulbs  
and neon



Dispose of at the  
**civic amenity site**

| Glass (crockery)



To be disposed  
of in **household  
waste bins**

► Crockery glass is not recyclable!

**AND IN THE FUTURE?**

A test site for the **introduction of the deposit system** is in progress  
in Rémuzat.



## BROWN BOXES

Dispose of in **special cardboard bins** or at the **civic amenity site**



✓ **Folded, empty and without polystyrene**

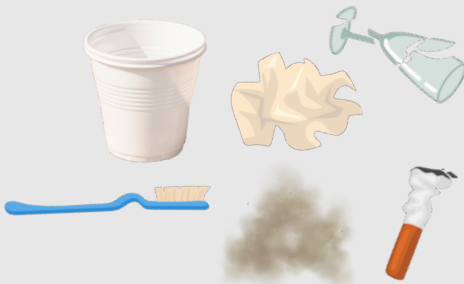


## HOUSEHOLD WASTE

Tissues, cotton buds, nappies, toothbrushes, broken crockery, hoover bags, cat litter, cigarette butts, dust, broken glass, etc.



**Household waste bin**



## SINCE 2023 - NEW SERVICE



A waste collection service is organised **in each area once a year**. It provides an additional service for residents who do not have a **suitable vehicle** or who are **unable to lift heavy objects**.

**Only bulky waste** will be accepted.

**Registration and collection dates** are available on our website ([www.cc-bdp.fr](http://www.cc-bdp.fr)).

**Hautes Baronnies**

**COLLECTE des ENCOMBRANTS uniquement sur rendez-vous**

Réservée aux particuliers

La collecte aura lieu au jour qui vous sera donné lors de votre inscription.

**COLLECTE des ENCOMBRANTS** GRATUIT

POUR BÉNÉFICIER DU SERVICE VOUS DEVEZ :

- Lister préalablement les encombrants à collecter.
- Prendre rdv en appelant la CCB DP au 04 75 26 34 37
- Déposer uniquement les encombrants mentionnés lors de votre inscription, sur le domaine public le jour de la collecte avant 9h ou la veille au soir après 19h.

**✓ ACCEPTÉS** Gros électroménagers (télévisions, réfrigérateurs, lave-linges...), mobiliers, literies, matelas, canapés....

**✗ NON ACCEPTÉ** Objets de + de 50 kg Déchets verts, gravats, vêtements, déchets toxiques et dangereux... (à déposer en déchèterie)

Communauté de Communes des Baronnies en Drôme Provençale  
170 Rue Ferdinand Fert - ZA Les Laurons - 26110 NYONS  
Renseignements et réservation : 04 75 26 34 37 - [www.cc-bdp.fr](http://www.cc-bdp.fr)



Your bulky waste **must not be thrown away with your household waste!** It is collected **separately**.



### IT WILL BE ACCEPTED

Major household appliances, furniture, bedding, mattresses, etc.



### IT WILL NOT BE ACCEPTED

Items over 50 kg, green waste, building rubble, clothing, toxic and hazardous waste, etc.



**To be disposed of at the civic amenity site**



Composting is a **natural process** that **recycles organic waste**, reducing the volume of household waste **by 30%**.

## HOW TO COMPOST ?

The CCBDP provides **individual composters** to the inhabitants of the area, at the preferential rate of **30 euros**.  
*Normal price: 70 euros.*

**For residents without a garden:**

There are **small areas** available in the municipalities. **Bio-bins** are also provided at the CCBDP reception desk in Nyons and Buis-les-Baronnies.\*



Composting **reduces the amount of waste** sent to landfill sites, and produces a **high-quality fertiliser** as part of an **eco-friendly and sustainable approach**.

I MAY



SMALL AMOUNTS



I MAY NOT



Fat, shellfish, large branches, grass clippings, wood, sawdust, wipes, tissues, nappies, dust, cat litter, ash, coal

Remember to **chop up your waste** into small pieces!



\*For further information, contact the CCBDP.

## ACCEPTED WASTE



WOOD



BROWN BOXES



FURNITURE



RUBBLE



GREEN WASTE



METAL



GLASS



BATTERIES



MOTOR OIL



FRYING OIL



TYRES  
WITHOUT RIMS



RADIOGRAPHS



INK CARTRIDGES



LAMPS



BATTERIES AND  
ACCUMULATORS



SPECIFIC DIFFUSE  
WASTE



BULKY WASTE



TEXTILE



ELECTRICAL AND  
ELECTRONIC DEVICES

## NON ACCEPTED WASTE



### Asbestos

Collected by authorised service providers or by the SYPP :  
+33(0)4 75 00 25 35



### Gas cylinders

Bring to resellers of the same brand



### Household waste

Dispose of in household waste bins



### Medicines and waste from healthcare activities involving infectious risks

Take to a pharmacy



### Fire extinguishers

Bring to fire extinguisher dealers



### Soil

Bring to a professional



### Bicycle batteries

Return to the distributor



### Agricultural tyres

Return to a specialised dealer



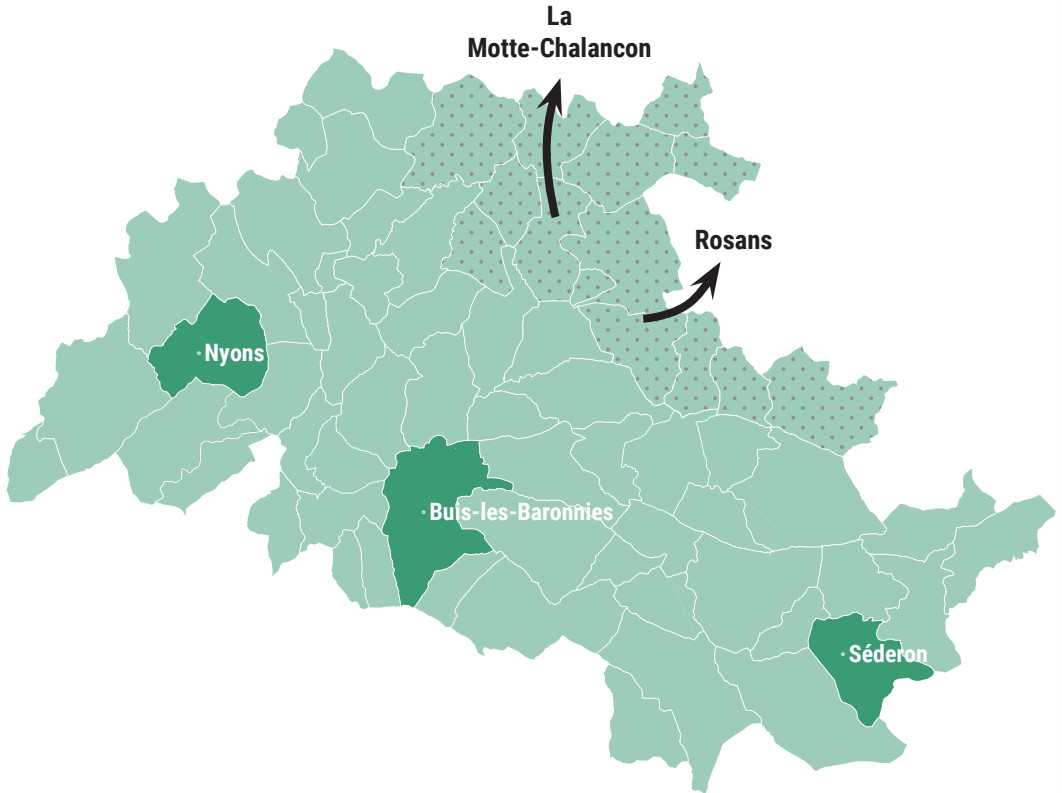
### Agricultural plant protection products

Return to a specialised dealer





Access is **strictly reserved** for residents of the CCBDP. Residents of the **Pays de Rémuzat** can use the neighbouring civic amenity sites.



## CIVIC AMENITY SITES

**OPENING TIMES**

	<b>BUIS-LES-BARONNIES</b>	<b>NYONS</b>	<b>SÉDERON</b>
<b>1st October to 30th April</b>	Mo, Tu, Thu, Fr 7am-12pm Wed, Sa 7am-12pm & 2pm-4pm	From Mo to Sa 9am-12pm & 2pm-5pm	Mo, Wed 2pm-4:30pm Sa 9am-12pm
<b>1st May to 30th September</b>	Mo, Tu, Thu, Fr 7am-12pm Wed, Sa 7am-12pm & 2pm-4pm	From Mo to Sa 9am-12pm & 2pm-5pm	Mo, Wed, Sa 9am-12pm & 2pm-5pm
<b>Closing</b>	Sun/public holidays	Sun/public holidays	Tu, Thu, Fr, Sun and public holidays



# WHY SORTING ?

## TO PROTECT THE ENVIRONMENT

What goes into household waste goes to landfills and the material is not recycled.

### WASTE CYCLE

1

The user disposes of his waste in the yellow bin.

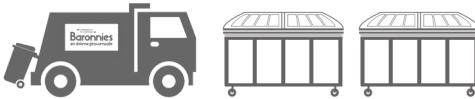


2

The collection truck empties the bin.



3



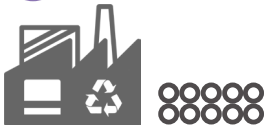
The waste is then taken to the transfer station (Buis-les-Baronnies or Nyons) to be emptied into 30m<sup>3</sup> containers, which are then collected and taken to the sorting centre.

4



At the sorting centre, waste is sorted by category (plastic, metal, etc.).

6



In the recycling plant, the balls are cleaned, reduced to pieces and remanufactured.

5



It is then formed into large balls and sent to the appropriate recycling plant.

**The best kind of waste is the kind you don't produce.**  
That is why there are some simple measures you can take!



**USE A  
WATER BOTTLE**



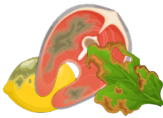
**RETURN MEDICINES**  
to the pharmacy



**ADOPT  
CHICKENS**



**MAKE  
COMPOST**



**LIMIT FOOD WASTE**  
Buy the right quantities,  
cook, etc.



**LIMIT SINGLE-USE ITEMS**  
Cotton buds, drinking  
glasses, etc.



**BUY IN BULK**  
Flour, pasta,  
rice, lentils, etc.



**STICK  
'STOP ADVERTISING'**  
on the mailbox



**BUY IN LARGE  
PACKAGES**  
Biscuits, pasta,  
detergent packs, etc.



**DONATE YOUR  
CLOTHES**  
Recycling depot,  
etc.



Clothes bins



**REUSE OR  
REPAIR**



Recycling depot **La Triade**  
Information on the back of the document

## HOW CAN I GET A COMPOSTER?

### Procedure

Download the voucher from  
our website: [www.cc-bdp.fr](http://www.cc-bdp.fr)

- > Vivre au quotidien
- > Gestion des déchets
- > Le compostage

Send the voucher and payment  
to the **CCBDP** address.

Once you have received your  
**collection voucher**, you can  
**pick up your composter at the  
civic amenity site.**



## Recycling depot La Triade

135 rue Ferdinand Fert  
ZA Les Laurons - 26110 Nyons

+33(0)4 75 27 07 81  
[3r-latriade@ancre.asso.fr](mailto:3r-latriade@ancre.asso.fr)  
[www.3r-latriade.org](http://www.3r-latriade.org)

**Opening hours**  
Tuesday and Saturday  
9:30am - 12:30pm  
Wednesday and Friday  
9:30am - 12:30pm / 2:30pm - 5pm

## THE 3 INTER-MUNICIPAL CIVIC AMENITY SITES

### Nyons

Rue Ferdinand Fert  
ZA Les Laurons  
+33(0)4 75 26 44 23

### Buis-les-Baronnies

1750 Chemin de Rieuchaud  
+33(0)4 75 28 33 42

### Séderon

D542 Sortie Nord  
+33(0)4 75 27 66 38